



CELEBRATING

10

YEARS OF ESH GROUP
2009 EDITION

2009 EDITION
IN THIS ISSUE:

EXPOSED:

WHAT'S GOING
ON AT ESH

EXCLUSIVE:

HISTORY OF ESH GROUP
GOING BACK OVER 100 YEARS

REVEALED:

ESH ADDED VALUE
THE VERY LATEST STORIES

Welcome

In this edition we are celebrating 10 years of Esh Group, however many of our companies go back a lot further...

Stephen Easten Building Ltd was first established over 100 years ago, whilst Bartram Walker dates back to the end of the Second World War. Lumsden & Carroll was established over 35 years ago with Deerness Fencing following shortly afterwards - many of the employees who helped establish the companies are still with us today.

The new £1.5 million, 6,000sq m facilities at Cramlington, being built by Lumsden & Carroll, are due for completion at the end of the year. These new Northumberland headquarters will provide primarily for Wilkinson Facilities Services, Stephen Easten Building and materials storage

facilities for all Esh Group businesses, as well as helping us to service new customers and to grow our business more effectively.

Despite the problems of the housing market and the knock on effect this has had on the construction industry, we are working our way through what everyone knows is a tough economic climate. Looking forward we are going to need to call on all of our past experiences and investments in both people and other resources.

The business climate is certainly challenging at this time and we appreciate the efforts that many are making to help the Group move forward!



WHAT'S INSIDE...

- 2. Company Round Up
- 6. Our Carbon Footprint
- 7. History of Esh
- 9. Family Fun Day
- 13. Esh Added Value
- 14. Esh Gossip

Sir Bobby Robson Tribute

Sir Bobby Robson and Esh Group were friends for many years and it was an association which had grown out of respect and admiration. Sir Bobby was an ambassador for the Group and he will be deeply missed by all.

Over the years his many 'business' visits have included opening Lumsden & Carroll Construction's offices in Leeds. Sir Bobby was guest of honour at the launch of Esh Group's new headquarters in Bowburn, as well as having agreed to become a trustee for the Esh Charitable Trust.

One occasion stands out particularly for Brian Manning: "We'd organised a night for our clients at the Live Theatre in Newcastle and had invited Sir Bobby. What we'd forgotten was that it was European Cup final night and Man U were playing! Sir Bobby was even more entertaining than usual and he took the opportunity to get in a few barbed comments about the clash."

A true gentleman, Sir Bobby reminded everyone of his strong values and principles when he opened a new road named in his honour at Newcastle Great Park in July 2008.

Michael Hogan was one of Sir Bobby's close friends. They both shared a passion for sport and spent many a happy afternoon following the racing. Michael explains: "My wife and I feel very privileged to have become so close to Bob and Elsie. I regard him as a person of the highest integrity. He was a man who afforded mutual respect to all people no matter what their background or wealth and that quality came naturally."

Sir Bobby was a popular guest at Esh Group Christmas parties and was well known for still being on the dance floor well after midnight. It was just before such an occasion that Sir Bobby had launched his cancer charity and he had spoken about it in a very emotional speech to the staff.



Sir Bobby Robson

"We couldn't have wished for a finer person to be associated with Sir Bobby was a true friend in our business."

FOCUS ON...



This year has seen the highest turnover for Dunelm Property Services, with a 30% growth on last year bringing turnover to just over £40 million. DPS are pleased to report that the job at St Pauls Road, Middlesbrough is running both on time and within budget.



"This has been the largest single new build project for the Group, consisting of the construction of 70 apartments and 27 houses at £8.9 million and is due to complete in November 2009."

So far July has seen the largest monthly turnover, with the frameworks contracts with South Tyneside Homes, Dale & Valley Homes and Cestria all running well. DPS have also received two Bronze Awards under the Considerate Constructors Scheme this year.

Dunelm Construction Projects, a new division of Dunelm Property Services focusing on care homes, has been launched this year. DCP are pleased to announce they have won their first two jobs totalling £10 million working with Avery Healthcare Limited.

Emphasis is now on developing future work as three major frameworks are all due to complete at the end of 2010. The Business Development team are currently looking towards possible new markets in both Cumbria and Yorkshire areas.

Esh Company round up



Eurocentral, Glasgow



Elmfield Square



Despite a tough year the market has shown signs of improvement, with the apartments at Elmfield Square, Gosforth now completely sold out, and the 80 units that were targeted for sales this year have all been reserved. A new marketing campaign, including radio advertising, has given sales a much needed boost.

We would like to congratulate Michael Black who received the prestigious 'Seal of Excellence' award. He was one of four hundred selected from seventeen thousand UK site managers to receive a Quality Award. As a further accolade Michael was confirmed the North East Regional Winner in the Medium Builder category. Michael has now moved on to work for Dunelm Property Services and we wish him well for the future.

The Grange development was launched this year, following extensive work to clear the site of contamination. This site will be the first code level 3 for Dunelm Homes with a mixture of 2, 3, 4 & 5 bedroom houses. Building will be kick started with plans to build a number of units for local Housing Associations. The Centurion Fields development at Ingleby Barwick was also launched this year, with a mixture over forty 3, 4 & 5 bedroom houses.

During the year Deerness Fencing and Sones Landscaping have begun combining their management structures, starting with the commercial side, with a view to working under a single structure by the end of 2009. The main aim is to strengthen both businesses so they can not only meet the expected recovery in the economy but also be able to bid jointly for a wider range of larger projects.

Jim Campbell has decided to step down as Sones' Operations Director and is leaving the business in Bob Wall's safe hands, so he can go off and tend to his own garden instead of looking after other peoples! We are sure you will join us in thanking Jim for all his hard work within Sones since they joined the Esh Group and wish him well for the future.

Sones Landscaping's two main contracts with Wear Valley Council and Derwentside Council, now both under Durham County Council, are both in their final year. This year has seen Sones secure their largest job to date, providing landscaping works at Eurocentral, Europe's largest Commercial Park situated on the Glasgow-Edinburgh corridor, extending over 65 acres.



RSPB Building, Saltholme



Middle Dock, South Shields



Eurocentral, Glasgow



St Pauls Road, Middlesbrough

Deerness Fencing has seen a decline in work due to the effect of the credit crunch depleting work for house builders. Their largest contract for Erimus will also be coming to a close at the end of the year. However Deerness Fencing is now the preferred supplier for fencing contracts to Bouygues Travaux Public, who is responsible for the new Tyne Tunnel crossing.

Jointly all their other contracts are working well and the Business Development team are focusing their efforts on finding work to replace the three major contracts that will be coming to an end.

ESH DEVELOPMENTS

LAND AND REGENERATION

In late 2008 the Esh Developments team was strengthened by the transfer of Paul Armstrong as Technical Director from Dunelm Homes, allowing us to do more innovative work in-house. With the slump in the housing market there was obviously less of a requirement for new land, however alternative opportunities arose in the Strategic Land market and the delivery of Affordable Housing sites for Dunelm Property Services.

Current sites include:

Middle Dock, South Shields

Former shipyard situated in the heart of the Riverside Regeneration Area. Esh holds a 50% stake in the Joint Venture Company, 'Holborn Regeneration LLP'.

Feethams, Darlington

The site was the former home of Darlington Football Club and has been derelict for several years; we have

now submitted a Planning Application for housing, with an option to purchase once planning permission has been obtained.

Chilton, Durham

40 acre mixed-use development, again with an option to purchase all or part of the site once planning has been granted. Esh have worked closely with Dalkia Ltd, who have planning permission for a wood-burning 15MW Combined Heat & Power Plant on the nearby Chilton Industrial Estate, which could provide 'Green' electricity and heat to the proposed development, allowing our site to score well under the new 'Code for Sustainable Homes'.

The Grange, Bowburn

The 30 acre site has planning permission for a mixture of housing, office and factory development. The first phase of residential development is to be carried out with support from the new HCA.

As well as several sites in rural areas throughout Northumberland and Durham for the delivery of 'affordable housing' schemes, working with DPS.



Since the last edition we have all gone through some very testing and difficult times as the recession has taken a firm grip of our industry, leading to a very challenging market place. However, it gives us great pride to say that throughout this period Lumsden & Carroll has remained stable and continued to branch out into new sectors, continuing to try and increase its market share within the Yorkshire regions.

A major strength to our business has been the support Northumbrian Water has given us over a very difficult period, including the commencement of the Trunk Main Cleaning Project, which will be undertaken over the next 3 years. This demonstrates the importance of this, our largest client, to our business and we are sure we can rely on everyone in the business to continue giving 100%.

Our framework with Yorkshire Water has now been operational for over a year and our understanding of client and market place continues to grow. Together with the framework for Environment Agency in Yorkshire, our presence in the area is slowly increasing, accumulating in the successful award of the drainage works of the A1 improvements between Barton and Dishforth to be carried out over the next 3 years.

“ It gives us great pride to say that throughout this period Lumsden & Carroll has remained stable and continued to branch out ”



Northumbrian Water Works

With the streamlining of Stephen Easten Building now being undertaken, making them a subsidiary of Lumsden & Carroll, specialising in Listed Building and Ecclesiastical works, our build division, headed up by Steve Conn, Operational Director.

Our success in completing works ahead of programme with KFC has led to us securing new schemes and forging new relationships - so a big thank you to the staff involved and keep up the good work. Our relationship with Gateshead Council also continues with us currently on site carrying out internal refurbishment works at Gateshead Library - an area of work we have not previously undertaken with this client. Our Leeds office has continued to grow and is presently carrying our contracts for Hambleton District Council and Huddersfield Council and continue to make progress in developing the company in the Yorkshire area.

We are pleased to announce that we have been awarded ISO 1800:01 Health & Safety Accreditation, which is valid for 3 years. A lot of hard work was put into receiving this accreditation so thank you to all involved for their efforts.

“ The strength and unity of the whole team is to be commended over this difficult time and has been the backbone to stability throughout. ”



Other new projects:

- Tyne Outfalls, Environmental Improvement, Preston Village & Chester-le-Street Flood Alleviation - Northumbrian Water
- Several separate bridge refurbishment schemes with Nexus
- Grindon Mews Care Home
- Regeneration of Seaham Docks



As everyone is aware trading is difficult at the moment, nevertheless Mechplant are continuing to deliver a wide range of services to a broad client base throughout the region.

In August this year we relocated all of our services to the headquarters in Bowburn, allowing both divisions of the company, small tools and plant hire, to operate from the same offices. By the end of 2009 operations will also be established in Cramlington which will allow us to improve our geographic reach within the region.

We would like to say good luck to Nicky Truby, Angela Monaghan, Lee Morton and John Dunn, who are all currently studying various NVQ level 3's and are anticipated to complete by the end of the year.



We are continuing our commitment to the segregation and recycling of waste, in order to reduce the impact of waste products sent to landfill. Last year our overall recycled rate stood at 92%, with only 8% of waste going to landfill.

New customers include:

- Southdale Homes (Consett)
- Interserve - Holme House Prison (Stockton)
- RN Wooler (Chester-le-Street)
- SGW & Walter Thompson (Middlesbrough)
- Works Infrastructure (Easington Village, Peterlee)

Sales for recycled aggregate and topsoil are slow, however we are looking to produce 20mm stone to supply to concrete businesses in the area, as they are able to mix 20% recycled stone into their product.

ESH FACTS!

- Last year Esh Group received 5,385,238 emails, over 4 million of these were spam!
- This year we've received 2,301,550 so far. Our email servers processes half a million of these and we rejected the rest.
- Esh Group currently stores 2 terabytes of computer data the equivalent of almost 3,000 CD's or one and a half million floppy disks
- On an average day Esh Group request 60,000 web pages.



Following a very difficult year of trading we entered into 2009 expecting another challenging year ahead. We are still working closely with our existing clients on Decent Homes and new build housing projects but the volume of work has been drastically reduced due to the current economic downturn.

Although we are still receiving a steady volume of tenders, securing work is becoming increasingly difficult. While we usually concentrate on the domestic market we will be reliant on securing work within the commercial new build and refurbishment market to help maintain our forecasted turnover throughout the year.

We once again have had to streamline our team from nine to six members of staff due to the decreased volume of work. This is largely due to the current economic downturn having a significant effect on new build housing developments which has always been a key part of our workload.

Inspired by our sister company Green Energies, Bartram Walker has continued installing renewable energy solutions under our own brand following the success of our Solar Thermal installations with Dunelm Property Services, Gentoo Construction and Keepmoat Homes.

minimal due to our high involvement with Corgi services, and a large volume of staff from Corgi having moved across to form the new Gas Safe Register team.



Pure Renewable Energies continue to explore a new range of sites for wind farm development. We have reached agreements with a number of landowners, with applications for planning permission intended to be submitted mid 2009.



Wind Turbines

" We have secured 18nr Air Source Heat pump installations in North Blyth with Community Energy Solutions. "

We have secured 18nr Air Source Heat pump installations in North Blyth with Community Energy Solutions which could lead to much greater things between the two companies. The company has also applied to be part of the Micro-generation Certification Scheme, which we firmly believe will give potential customers the confidence to use our services as it demonstrates that we have the capability to undertake the supply, design, installation, commissioning and handover of Microgeneration Heat Pump systems.

The operations team are working closely with the newly formed Gas Safe Register team following their appointment by the HSE as the company responsible for gas safety throughout the U.K. The effect on the business has been



The team have integrated well with Group companies, and the business is currently undergoing restructuring and modernisation, with Bartram Walkers Electrical Division now working alongside Wilkinson Facilities Services. Further to this Conor McKernan has been appointed as the new Managing Director of WFS. This is an important appointment and Conor will need every assistance in performing his new role which we are sure everyone will give him.

New clients include Northumberland County Council, as well as a new contract agreed with Northumbria Police. WFS continue to deliver maintenance works to Barclays, Boots and Lloyds TSB.

FOCUS ON...



This year saw the retirement of Gordon Bennett, who had been with the company for 5 years. Gordon has helped many people with their training and he was made a regional ambassador by the LSC to help promote the value of skills across the North East. We are sure you will join us in wishing Gordon well in the future and offering a big thanks for all his hard work over the years.

NECT are currently working with Connexions to deliver a new training programme, starting in September, to around 10 young people, aged 16 - 19, who have left school and been unable to find work or a place at college. Unfortunately the number of people in this category will be growing in the present market, making this an important area of work for NECT as it will no doubt become a growth area and lead to further work.

The training focuses on trying to raise aspirations and lead the young people to full time training if no work is available. We would also like to offer them 5 days work within our businesses as part of the 20 day training course. Rather than just hire a trainer for the remaining 15 days, we see this as an ideal opportunity to give Group staff the chance to deliver a piece to the young people, regarding their own work experiences, background and role within the Group that can help to inspire them to keep trying.

" We see this as an ideal training opportunity for our own people and at the same time feel that this has massive advantages over just normal training and should make the scheme more successful and lead to further opportunities for NECT in this area. "

While this work will be paid for by Connexions, NECT, in conjunction with Esh Charitable Trust, are looking to put some "Taster to Work" courses together. These will be aimed at 12 -14 year olds and attempt to continue the work of F4E, although on a much smaller scale, but keeping Esh Group in the forefront of working with young people.

Our carbon footprint

Due to the importance of climate change, we are working hard to reduce our effect on the environment.

Esh House Energy Monitoring

Since the start of 2009, Esh Group has taken a pro-active approach to reduce both its electricity bills and carbon footprint. Working with our renewable energy business, Green Energies, we have developed an 'Energy Saving Plan' incorporating ways that employees can help make a difference by saving energy.



Climat-Hus visuals

Examples include turning off lights in vacant toilets, meeting rooms and kitchen areas to shutting down PCs and laptops during lunch breaks and at the end of the working day.

To help monitor the impact of our green approach, we have installed a plasma TV displaying our electricity usage in our headquarters. We are able to display a range of information including our electricity usage on an annual, monthly, weekly, daily and even half-hourly basis.

Before implementing our Energy Saving Plan, we estimated that our annual electricity bill for Esh House would be approximately £20,000. After a six month analysis we are on track to save at least 10% off our annual electricity bill for Esh House. As a result we are now looking to replicate such savings throughout the business.

Who are Climat-Hus?

It is almost two years since members of staff from Esh Group were invited by the Swedish timber frame manufacturer, Trivselhus, to visit their show homes and one of their factories in southern Sweden. Since this time a relationship has been formed which will see their timber frame homes imported to the UK exclusively for Climat-Hus, a brand comprising the Esh Group, Trivselhus and Wisemove.



Dunelm Homes and Dunelm Property Services have been investigating various house building methods and heating and ventilation systems in preparation for

the forthcoming major changes to the Building Regulations and the Code for Sustainable Homes.

The Code has nine categories each measuring the new homes' performance when measured against each criteria, from energy efficiency, water usage to ecological issues and construction management. Most effort has been placed on

GREEN ENERGIES: Competition

Green Energies and Richard Avenue Primary School in Sunderland have teamed up to help Year 6 pupils understand the growing importance of sustainable energy. Green Energies designed a fun 'game show' format for the children to take part in to help them understand about generating energy from sustainable sources.



Green Energies

Wes English of Green Energies explained:

"The school are investigating installing a Solar Thermal Heating System which we estimate will help to save over £1000 a year on its current gas bill."

"During our discussions it became clear that there was a real opportunity to get the pupils involved so they could learn about the importance of renewable technology and also give them an idea of how renewable technology works."

establishing the most economical method of heating a new home and there are many different methods of doing so, but the common starting point of all is a highly insulated building envelope - and that's where the Climat-Hus timber frame has its advantages.

Dunelm Homes have obtained planning permission for the initial 121 dwellings at The Grange development at Bowburn where the first seven Climat-Hus' are proposed. Not only will the houses be highly insulated and comprise innovative heating systems but customers will be given an opportunity to design the floor layouts using the Swedish architect designed, open plan houses as a starting point to create their ideal home!

History of Esh

Although Esh Group is celebrating its 10th birthday this year, the Group's history goes back a lot further...

Both the founding companies of the partnership were formed over 30 years ago, whilst Bartram Walker can trace their roots back to the end of the Second World War and Stephen Easten originally formed shortly after the turn of the 19th Century.

Lumsden & Carroll was formed back in 1971, with Deerness Fencing following not long after, in 1976. These two like minded companies, both based in Esh Winning, went on to form the Esh Partnership in 1993. In 1995 they formed Dunelm Homes, which was the first of many joint ventures for the Group.

Esh Group was officially established in 1999 when a formal partnering arrangement was entered, the holding company was established and individual company shares were exchanged.

The Group rapidly began to outgrow the offices in Esh Winning, leading to an investment of £3 million in an 8 acre site at Bowburn in 2003, to provide new, purpose built headquarters for Esh Group. With 30 years in Esh Winning and many employees living in the village, we were initially disappointed that we couldn't stay in the village. However the move to Bowburn was very good news for the Group, in that it consolidated all the fragmented companies under one roof and enabled us to realise the synergies and economies of scale that exist between the various companies. It also meant we could provide storage buildings and yards, fabrication shops, vehicle workshops and a fuel dispensing station for the Group's fleet of vehicles and plant.

Stephen Easten Building joined Esh Group in 2006, becoming the twelfth subsidiary, allowing us to safeguard more than 100 jobs, following a buy out by the Group. Stephen Easten were due to celebrate their 100th birthday that year when they were unfortunately plunged into administration.

"Esh Group was officially established in 1999"

The year 2007 saw the expansion of Lumsden & Carroll Construction, with the development of their Yorkshire Division. Headed up by Chris Walker, Lumsden & Carroll established the new division to cover Yorkshire, Humberside, North

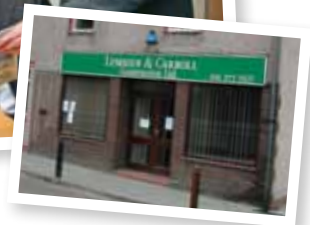


Esh House, Bowburn



Staff at old plant yard, Esh Winning

Midlands and the M62 Corridor, whilst creating over 70 jobs and working across a range of sectors. The new Yorkshire offices at Thorpe Park, Leeds were launched by Sir Bobby Robson. The company established a good base in the market and have been successful in securing a number of significant projects and framework contracts.



Esh Charitable Trust established...

In 2006 the generous cash support which Esh Group's shareholders have always provided to the local community was expanded and formalised by the establishment of a Charitable Trust in their name. The shareholders decided to donate £1million to this new charity, Esh Charitable Trust, over the following five years. This sum represents nearly 2% of annual profit (many companies now give 1% to charitable causes) so this represents a sincere and substantial commitment.

The aim is to support the causes that have always been dear to the heart of the original founders of the Group - young people, lifelong learning, the environment and the local community. The first grant was given to the new Durham Community Business College to help it gain special status as a 'Business Technology and Enterprise' college.

Over the years, it has given out over £400,000 in grants to numerous worthy causes throughout the North East. In addition to this the Trust also launched Grow with Esh, a flagship project, in 2007.

Tyneside Cyrenians Self Builders



Tyneside Cyrenians

In what was believed to be a national first, Lumsden & Carroll Construction partnered with Tyneside Cyrenians, to provide exciting, practical work experience and the possibility of full time employment to its service user residents.

The project involved the construction of a building which provides bedroom accommodation and new office space in Newcastle upon Tyne. The building produced was a timber framed, ecologically and environmentally friendly construction inspired by the renowned 'Walter Segal Self Build' method and designed by leading regional architects, Jane Darbyshire and David Kendall Limited.

The skills they developed here proved to be the key to a new life and helped them to 'get back on track' by giving them a sense of pride, raised self esteem and a realistic chance of future employment. All of the men involved underwent a foundation course in Health & Safety and studied the core units of NVQ in Construction. This, importantly, made them eligible for their Construction Skills Certification Scheme card, the construction sector 'passport' for site workers.

In 2007 the scheme won the Leadership and Development Award - Constructing Excellence in the North East.

Impact:

From the original 13 people, 7 completed the scheme achieving NVQ Level 2 in Construction, CSCS cards and other trade tickets. 2 'self builders' were employed by Lumsden & Carroll, whilst 5 were employed by Tyneside Cyrenians on the Maintenance Team. However the best result was the significant improvements in self-confidence and self-esteem shown by all of them.

Board Appointments...

Freddie Fletcher

Freddie was appointed in 2006, having worked in sales and marketing before running the housing division of John Lawrence (Glasgow). Following his retirement from NUFC in 2000, he accepted a number of non-executive positions and has a marketing consultancy business, Mercer Street Marketing. He was appointed a Freeman of the City of London in 2005.



James Ramsbotham

James joined Esh Group from Barclays Bank Plc as Executive Vice Chairman in 2004. In 2006 James left his post as vice-chairman of the Group, where he had an influential role in the expansion of the Group, to take up his role as Chief Executive with NECC.



John Walker

John joined the Esh Board in 2009, after retiring from his role as Chief Executive with the urban regeneration agency English Partnerships in November 2008. John's appointment is a significant development for the business, as his extensive knowledge and experience will be invaluable.



Fit for Employment wins a national award!

The Fit for Employment programme, ran with Deerness Valley Comprehensive School (now Durham Community Business College), revolutionised the way construction companies recruit apprentices and educate young people. The scheme addressed gender imbalance within the construction industry by improving the intake of young women.

In 2005 the scheme won the national Merrill Lynch 'Investing in Young People Award', which recognises companies that are raising the achievement of young people. It was also honoured by the former Prime Minister, Tony Blair, saying "Fit for Employment is a fine example of the North East leading the way!"

Esh Group takes great pride in the fact that many of their senior staff are 'home grown', some are former students of Deerness Valley Comprehensive School itself. The initiative was developed with the school, hoping that it would provide students with an insight into construction and the chance to experience our working environment, as well as the opportunity to develop real skills for use in the real world.

Impact:

In the 3 years that the scheme was running, 60 candidates were recruited and placed in full-time employment. The national average of students staying in structured learning after age 16 was 45%. In 2004, 78% of students were in structured learning, rising to 80% in 2005.

2009 Family Fun Day!

This year's fun day was a massive success. We raised money for charity and everyone had a fantastic time!

It really was a day for the children, with the grounds of Esh House being transformed into a perfect place to play with numerous attractions. Luckily the weather was on our side with glorious sunshine all day, unlike the previous day's dramatic down pour!

The face painter was rushed off her feet and we had monsters and butterflies galore. Whilst the kids were playing we made sure we didn't forget about the adults, who were entertained by The Black Sheep Band and a constant supply of food and drink!

There were many photo opportunities to be had with the JCB, Police Patrol Car and Fire Engine who decided to have a competition of whose horn was loudest - much to the pony's upset who was on hand to cart the children around Esh grounds.

Whilst we had mini go-karts purely for the children, the rodeo bull became a massive hit with the adults - even our Chief Executive made a very 'brief' appearance on the ride! We had kids pulling wacky acrobatics on the bouncy castle and slide before racing off to enjoy the magic show and balloon modeller. For our young explorers we had a treasure hunt which had children running all over looking for clues hidden high and low, even cheekily in some people's pockets.

Our giant Connect 4 was a hit, with adults and children taking each other on to see who would triumph. There was also hook a duck where nobody left without a prize!

We were joined by our friends from the Newcastle Eagles and the Wheelchair Basketball Team who brought along a hoop, balls and even some spare wheelchairs so the kids could learn how to shoot some hoops - whilst getting an autograph or two.

The Raffle and Tombola were a big success, raising a grand total of £221.30 for charity! Thanks for everyone's generosity, including all the companies and staff who donated prizes.

The day was eventually rounded off with the stocks being brought out for those who were brave enough to volunteer.

Finally a big thank you to everybody who organised and attended making the day a huge success once again!



Esh added value!



Grow with Esh 2009 Launch Day

Grow with Esh!

The flagship project, launched by the Esh Charitable Trust in 2007, is designed to instigate a wide range of positive outcomes in schools across the region using the focus of a horticultural project. Since its launch Grow with Esh has enabled sixty schools and hundreds of children across the region to run some amazing gardening projects.

Last year's winners were:

- 1st Place: St Peter's C. of E. School
- 2nd Place: Tyneview Primary School
- 3rd Place: Wolsingham Primary School
- Runners Up: Shilbottle First School
Greatham C. of E. School
Spring Gardens School
Biddick Primary School

This year twenty primary schools, from the borders Scotland to North Yorkshire, have each received £1,000 grant which will be used during the course of the summer to set up and develop their individual projects. Examples of some of the projects include vegetable patches, gardens for butterflies and bumble bees, sensory and wildlife gardens.

The judges of the extra £5,000 prize money, which will be announced later this year, will be looking for projects involving the community as well as providing excellent classroom learning and highlighting issues such as healthy eating and entrepreneurship.

Business in the Community, who attended the launch event this year, complimented the scheme, stating that they recognise what a great example it is of how Esh Group supports the future of the region through young people.

Esh Group supporting the region



Durham Business School has calculated that Esh Group benefited the North East economy by around £357million in 2007 as a direct result of its 'Buy Local' strategy. The strategy is fundamental to the philosophy of Esh Group and its subsidiary companies, which have always sought to source products, services and labour from the North East wherever possible.

The methodology employed in the study is known as the Local Multiplier (LM3). LM3 measures the multiplier effect of income into a local economy over three rounds of spending. The measuring process tracks these monetary movements within a defined geographic area. In Esh Group's case the LM3 figure was high, at 2.38, indicating that for every £1 Esh Group receives in income, a further £1.38 is generated in the local economy.

Brian Manning explained:

"It's really satisfying to have solid evidence that the way we run Esh Group is so beneficial to the North East economy. We hope that by showing the benefits of our 'buy local' policy that others may follow our lead."

"We are not advocating a ring fenced region - we are looking to promote sustainable procurement that looks at price and quality as well as delivering added value benefits to the region such as CSR, local employment and workforce development at all levels."



Fab Flournoy and David Halfacre with Newcastle Eagles Wheelchair Basketball Team

Sponsorships

Newcastle Eagles Sponsorship
Dunelm Property Services were excited to be involved with the Newcastle Eagles' entry into the Great Britain Wheelchair Basketball Association superleague in 2008/9. The fourteen-strong team comprised the region's best wheelchair ballers - including a number of ex-GB members, Lee Fawcett, Stewart Pimblett and Paul McGinty.

DPS also provided sponsorship to the Newcastle Eagles BBL team who celebrated a triumphant victory at the end of the season winning a total of three out of four trophies.

We wish both the Newcastle Eagles and the Eagles Wheelchair Basketball team well in the new season!

Esh Winning FC
Esh Group has been supporting Esh Winning Football Club for over 35 years now and we are pleased to uphold our commercial and social links with our home village of Esh Winning through our continued sponsorship of the club.

Esh Group Stadium
Durham City AFC have agreed to rename their stadium the Esh Group Stadium.

Charity fundraisers

Wayne Burns, from Dunelm Property Services, is feeling very proud of himself and rightly so after he recently completed a charity cycle ride.

Wayne recalled: "It was hard work and some of the days I wanted to give up when there was high winds in our faces and rain bouncing off our heads, but I just kept thinking about all the people that had sponsored me and the people that I was helping."

The finishing stages were fantastic, riding up the Champs Élysées with people cheering and clapping, then to stop the traffic at the Arc De Triomphe and finishing with the Eiffel Tower behind us and people shouting and cheering!"

Future Business Magnates

The Future Business Magnates project is now in its 4th year and a team from Mechplant North East partnered pupils from Hermitage School in Chester le Street. The team made the decision to develop a range of high-visibility products, named 'Be Active Think Safe' (BATS), which included vests, arm bands and bag bands - all featuring a bat logo.



Esh Charitable Trust pledge support to DCCC's new charity

Earlier this year Durham County Cricket Club launched the Durham County Cricket Foundation worth £500,000, with the Esh Charitable Trust as their main community partner.

The charity aims to provide inspiration, motivation and to raise self-esteem in the North East community, based upon five activity pillars of Health, Education, Social Cohesion, Grassroots Sport and Club Development.

Congratulations!

We would like to congratulate Nino Asoni, Charles Neadley and James McCrie on completing their degrees. Also congratulations to Johnathon O'Neill, who passed his HNC in Construction. *Well done everybody!*



One Million Green Fingers

One Million Green Fingers

A group of volunteers from Lumsden and Carroll have been hard at work to create a new sustainable garden for Hunmanby Primary School as part of Yorkshire Water's One Million Green Fingers initiative. The group included Tom Pearson, Caroline Beavers, Paul Rayner, Jim Clark, Owen Clark, Dave Pratt, Richard Storr and Paul Watson.

Four new raised beds were created that will be used by the school's gardening club to plant a range of fruits and vegetables and a greenhouse has been put up. New wire fencing and posts were installed, as well as paving and gravel laid around the garden areas. The produce grown in the new garden will be used in the school's kitchens and sold on to parents to fund further growing projects.

DPS teach pupils about site safety

Earlier this year Dunelm Property Services ran a competition with St. Cuthbert's School, aimed to raise awareness of the dangers of children playing near to construction sites, especially



over the summer holidays. Year 4 pupils took part in the competition to design a series of health and safety posters giving other youngsters potentially lifesaving advice about the dangers of playing on building sites.

The six competition winners each received gift vouchers for their designs and all the 29 posters designed by pupils have been put on display around the new Parkfield Hall development site in the town.

We would also like to congratulate the following for their efforts to raise money for various charities:

- Jason Dixon, Lumsden & Carroll - Charity Walk
- Stephen Francis, Dunelm Property Services - Charity Walk
- Ian Smith, Dunelm Homes - 3 Peaks Challenge
- Adrian Miller, Esh Developments - Paras' 10



WFS in the community

Wilkinson Facilities Services in the community

WFS have teamed up with Atkins to help out the community, including the donation of a number of gifts to be handed out at a local Children's Hospital. Also Steve White from WFS volunteered his time to help 'make a difference' at Wakefield Hospice.

What's your added value?

Have you taken part in a similar activity to those above or know of somebody that has.

If so please contact the Marketing Department at Esh House, we would love to hear from you no matter how big or small the story may be!

Tel: 07976 733244
Email: marketing@esh.uk.com

Gossip... Some staff news here at Esh!



Lumsden & Carroll 5-a-side team

Northumbrian Water recently organised a 5 a side competition at Soccarena in Belmont, Durham.

24 teams entered in total, including a team of Lumsden & Carroll's finest consisting of Brian Manning, Ian Derbyshire, Steve Gunter, Michael Brandwood, Brian Wray & Chris Fox (check out the knobby knees on the photo). We remained unbeaten throughout all the group stages, however eventually finished runners up after a gruelling final, losing on 5-4 on penalties. Better luck next time lads!



Dunelm 5-a-side team

Dunelm Property Services recently took part in the CIOB Annual 5 a side Football Tournament for a second year running.

The tournament was held at Complete Football - Gosforth Race Course. 12 teams entered the tournament, including Datim Building Services, Laing O Rourke, Frank Haslam Milan, Surgo & Brandon Tool Hire.

The team consisting of Graham Morgan, Andrew Harrow, Phil Milburn & Garry Miller, won all their group matches taking them through to the semi

Weddings!

Wishing our Esh staff many years of happiness!

- Wes & Sarah English
- Andrew & Heather Cullum
- Neil & Sharon Carpenter
- Paul & Carly Carr
- Lisa & Michael Longthorne



Special Birthdays!

Wishing you a very special birthday from all the staff at Esh!

- Debbie Archer - 21
- Rachael Urwin - 21
- Lyndsey Young - 21
- Robin Purves - 50
- Dave Harrod - 40
- Jason Dixon - 40
- Alan Irvine - 50
- Mark Derbyshire - 40



Babies!

Best wishes and good health to all these beautiful babies!

- Addison Olivia**
7lb 3oz - Toni Robson
- Rudi Thomas**
7lb 14oz - Sarah & Stephen Wilkie
- Joel Archie**
8lb 13oz - Karen Roddam
- Imogen Hannah**
6lb 3oz - Colin Willets
- Katie Adele**
7lb 14oz - Norman Barnett
- William James**
9lb 1oz - Jonathan Hanson
- Geoff Woodcock** - became a granddad for the first time to baby Oliver - 7lb 9 oz



Contact Us!

Do you have a story for Kaleidoscope?

If you would like to submit an article or personal announcement for a future edition, please contact the Marketing Department at Esh House.

Tel: 07976 733244
Email: marketing@esh.uk.com



www.esh.uk.com

enquiries@esh.uk.com

Tel: 0191 377 4570

Esh House, Bowburn North Ind Est
Bowburn, Durham DH6 5PF